



Burrells Wharf Square, London

Monthly Rental Of £1,950

Two double bedroom apartment

Riverside development

24 hour concierge

Leisure facilities

Secure parking

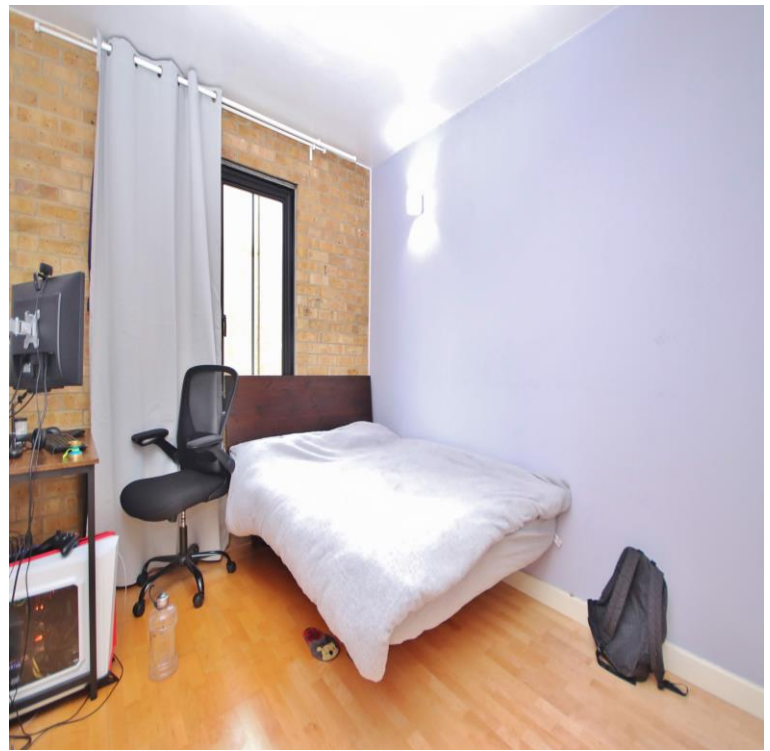
River views

LANDMARK 
ESTATES

Arrange a viewing: **020 7515 0800**

View online: **www.lmlondon.com**

LML04106



New to the market this riverside apartment in the sought after development of Burrell's Wharf Square. Offering two double bedrooms with exposed brick work. Open plan kitchen and lounge with a large private balcony with river views. Further benefits include a secure underground parking, The development features a BBQ courtyard area, 24 hour concierge, gymnasium, sauna, jacuzzi and a swimming pool. The Thames clipper service takes off from the development and there are two DLR stations within a five minute walk of Burrells Wharfs and Greenwich is approx. 10-15 walks thanks to Greenwich foot tunnel. Available 6th June 2022



Tenure:

Service Charge:

Ground rent:

Lease remaining:

**Local Authority: *Burrells Wharf
Square***

Particulars of the title and any other related information should be verified by the purchaser's solicitor prior to making a commitment to purchase.

Descriptions of the property are subjective and are used in good faith as an opinion and NOT as a statement of fact. Please make further specific enquires to ensure that our descriptions are likely to match any expectations you may have of the property. We have not tested any services, systems or appliances at this property. We strongly recommend that all the information we provide be verified by you on inspection, and by your Surveyor and Conveyancer.

020 7515 0800
valuation@lmlondon.com
www.lmlondon.com

The Gatehouse, 264 Westferry Road,
Docklands, London, E14 3AG

